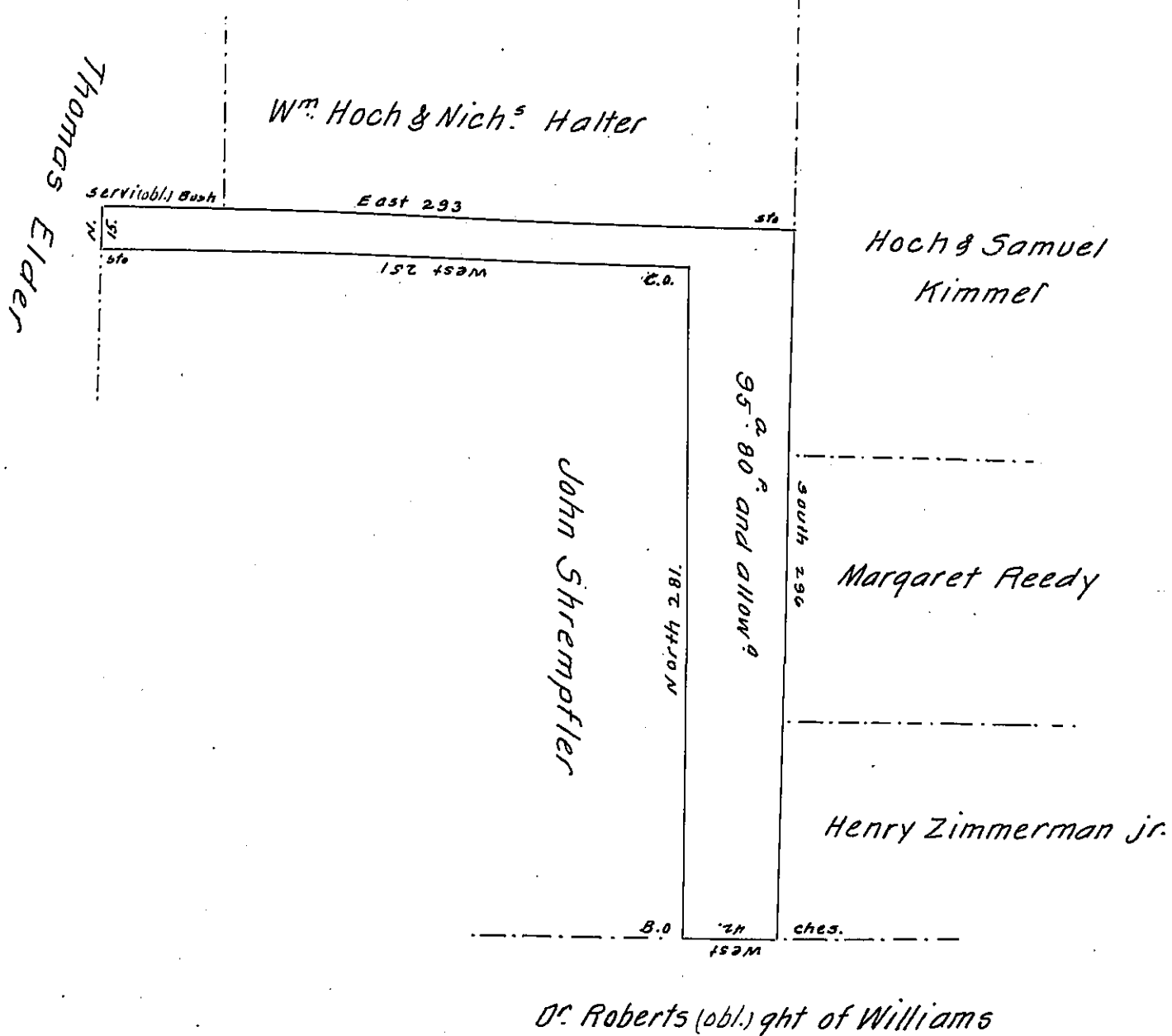


FORM NO 1.



Surveyed January 29th 1830 for Joseph Workman & Conrad Fry by virtue of their Warrant of 14th January 1830. Situate in Lykens township Dauphin County. Containing Ninety five acres, eighty perches and allowance of Six per Cent.

To Gabriel Hiester }
Esq^r. Surveyor Gen. } John Davies D. S.

I approve of the above. September 22^d 1830.

John Paul, Junr D. S.

Jacob Spangler Esq^r. }
Surveyor Gen. Pa } }

IN TESTIMONY that the above is a copy of the original remaining on file in the Department of Internal Affairs of Pennsylvania, made conformably to an Act of Assembly approved the 16th day of February, 1833, I have hereunto set my Hand and caused the Seal of said Department to be affixed at Harrisburg, this fourteenth day of June 1907.

Henry Houck
Secretary of Internal Affairs.